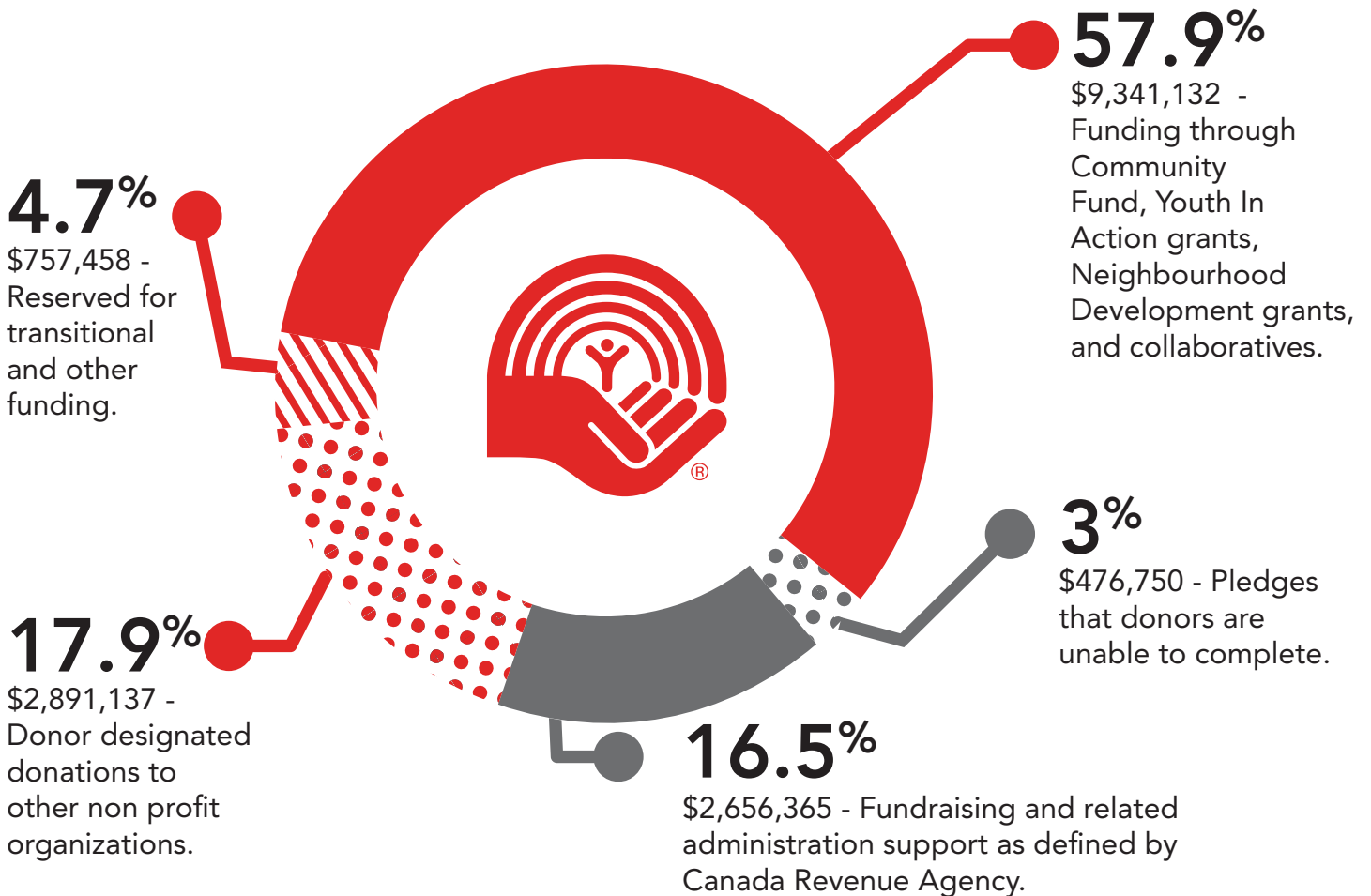


How your donation is invested



United Way
Peel Region

United Way of Peel Region takes great care in how your donor dollars are distributed. In the simplest terms, this is how our 2012/13 financial results and community investment of donor dollars break down:



Detailed, independently audited financial statements are available at unitedwaypeel.org/annualreport

A+

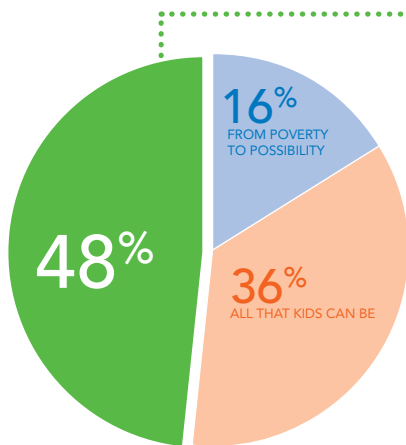
AN AMAZING RETURN ON YOUR INVESTMENT!

MoneySense Magazine has given United Way of Peel Region a rating of A+ for Overall Charity Efficiency in its 2012 Charity 100 Report.

Source: MoneySense Magazine (2012) moneysense.ca

How donations to the Community Fund are invested

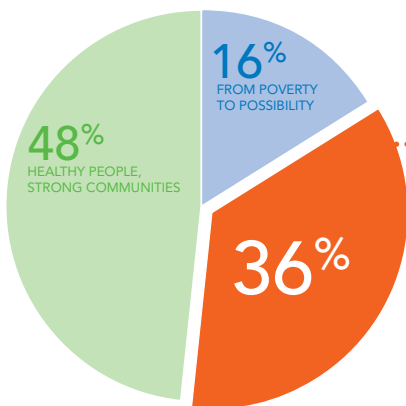
HOW YOUR DONATION BUILDS STRONG COMMUNITIES



STRONG COMMUNITIES

- Provide support to those who have been abused, including women, children, seniors and men
- Support people facing challenges related to mental health and disabilities
- Work to increase public awareness of mental health and mental illness and reduce stigmatization of racialized communities.

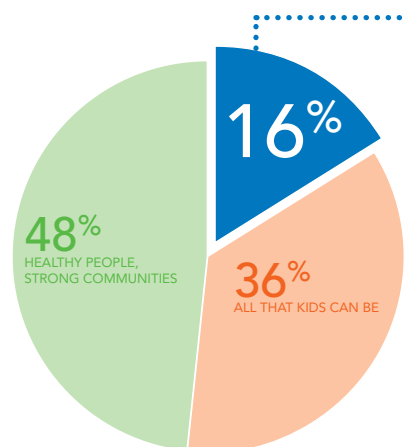
HOW YOUR DONATION HELPS KIDS BE ALL THEY CAN BE



ALL THAT KIDS CAN BE

- Ensure children get a good start in life so they are ready to learn when they start school
- Give children and youth access to programs that keep them engaged, develop confidence in themselves and their abilities and prepare them to succeed
- Educate parents to increase their capacity to support their children
- Support mental health programs for youth (aged 16-25)

HOW YOUR DONATION MOVES PEOPLE FROM POVERTY TO POSSIBILITY



FROM POVERTY TO POSSIBILITY

- Support people to get back on their feet by making sure they have access to the most basic needs in life - food, emergency shelter and transitional housing supports
- Work with community leaders and government to make sure there are policies in place that lift people from poverty and build their independence